

Data Sheet

Wacom Ink SDK for verification

*For
signatures
you can
trust*



WACOM® for Business



Wacom Ink SDK for verification

What it is and how it works

What is the Wacom Ink SDK for verification?

A software-based method of digitally verifying handwritten eSignatures in real time. As such, it helps prevent fraud across a wide range of signature-centric workflows in financial services, healthcare and the public sector, and is far more accurate than visual checks by employees.

How does Wacom Ink SDK for verification work?

The SDK can be used to connect an application such as a CRM system, which is used to store genuine examples of customer signatures, to the SDK's signature verification engine.

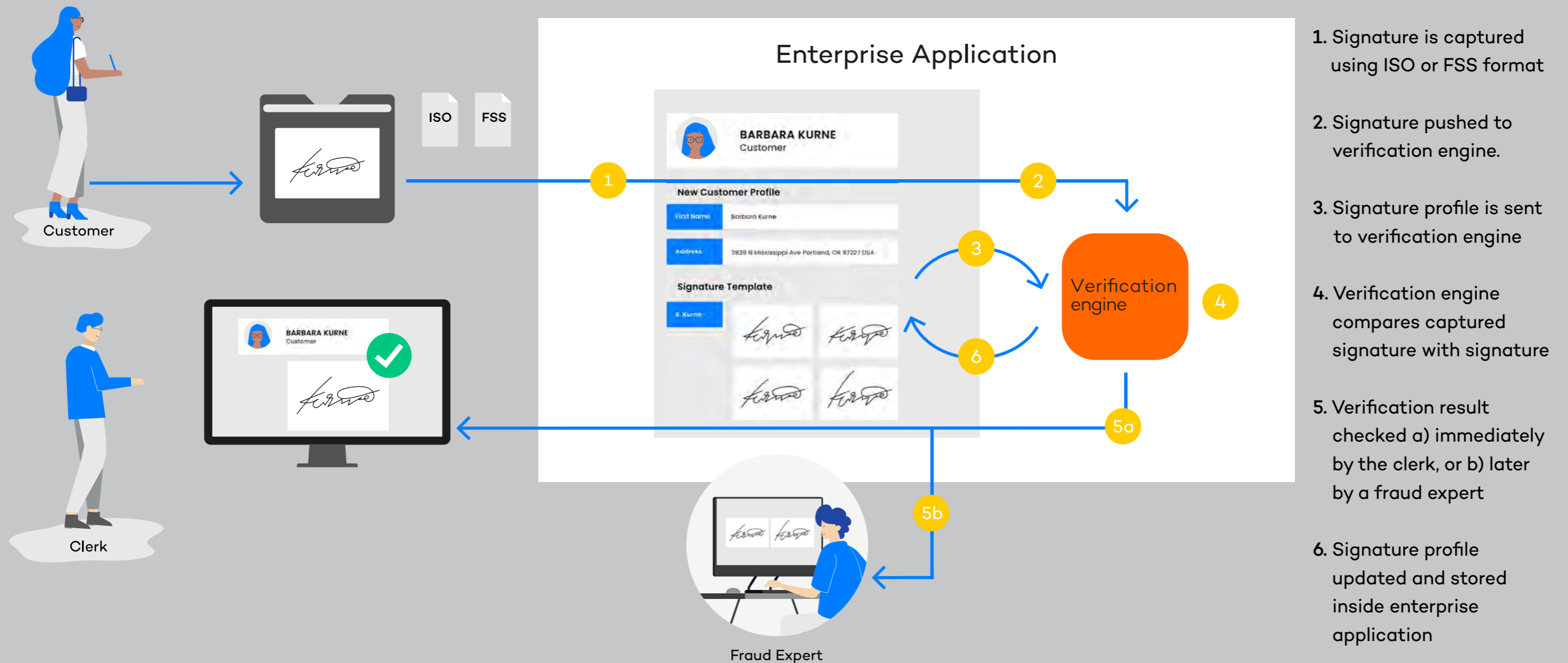
When a new handwritten eSignature is captured on a compatible device, the verification engine compares it with a set of genuine examples in real time. It then generates a simple, highly accurate and instant acceptance or rejection message. This message is based on a comparison score generated by the verification engine of between 0 and 1, where 0 is no match at all, and 1 is an exact match.



Wacom Ink SDK for verification

Sample workflow, financial services

Many transactions still require a handwritten signature for authorization. Wacom's signature verification technology helps bank clerks and anti-fraud teams spot fake signatures by comparing them against known genuine examples.



1. Signature is captured using ISO or FSS format
2. Signature pushed to verification engine.
3. Signature profile is sent to verification engine
4. Verification engine compares captured signature with signature
5. Verification result checked a) immediately by the clerk, or b) later by a fraud expert
6. Signature profile updated and stored inside enterprise application

What makes Wacom's solution different?

Wacom's approach to signature verification is based on decades of expertise in developing handwritten eSignature hardware and software. Unlike alternative solutions, it:

1. Is optimized for two scenarios: unauthorized individuals faking a signature, and genuine signatories disguising their own signature.
2. Supports real-time digital and image-based signature comparison in a single solution.
3. Is compatible with Wacom devices and all third-party hardware that generates handwritten eSignatures in ISO format.
4. Enables verification starting with a single signature and allows progressive improvement in verification accuracy as more signatures are captured.
5. Provides a straightforward migration path from scanned paper-based signatures to a fully digital handwritten eSignature solution.
6. Mitigates compliance risks because no data is stored by the SDK, unlike server-based alternatives.



How is the SDK implemented?

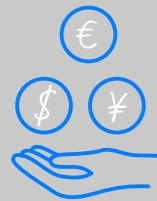
The Wacom Ink SDK for verification is a lightweight SDK that enables fast, easy integration with existing applications and infrastructure.

It's compatible with any type of application such as a CRM system that can store a signature file, and any hardware that captures handwritten eSignatures in ISO format.

Unlike alternative solutions that require their own proprietary server infrastructure, the Wacom Ink SDK for verification is installed on the customer's own server, and is called by the relevant application via an API.

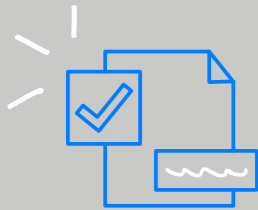
All captured eSignatures and data are also stored on the customer's server, and not by the SDK. This eliminates any potential compliance risks or data privacy issues.

What are the typical use cases?



Financial Services

Verifying identities for significant transactions in real time and helping anti-fraud teams spot suspicious signature anomalies.



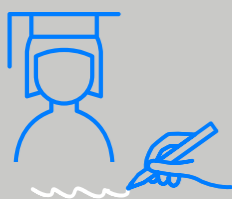
Public Sector

Preventing election fraud by verifying that postal votes in an election have only been completed and submitted by eligible citizens.



Healthcare

Protecting the authority of senior medical staff to approve specific procedures or medications, according to compliance requirements.



Education

Confirming the identity of students when they arrive at an examination center to take important tests.



Hospitality

Avoiding the theft of valuable goods by confirming authorized acceptance of deliveries at restaurants, etc.

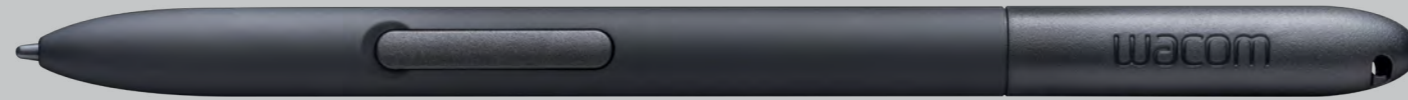
Signature
Verified ✓

Try it free
Convince yourself



Please visit this URL to register for a free trial package of the Wacom Ink SDK for verification:
wacom.com/verification-sdk

More human



More digital



Japan (HQ)

For more information please contact:

Wacom Co., Ltd. · Sumitomo Fudosan Shinjuku Grand Tower 31F, 35F,
8-17-1 Nishi-Shinjuku, Shinjuku-ku, Tokyo 160-6131, Japan
vm-info@wacom.co.jp · 03-5337-6706



Americas

For more information please contact / Pour de plus amples informations,
veuillez contacter / Para obtener información adicional, póngase en contacto
con: Wacom Technology Corporation · 1455 NW Irving Street, Suite 800 |
Portland, OR 97209 USA
esign@wacom.com · 1-503-525-3100



Europe, Middle East and Africa

For more information please contact / Pour de plus amples informations,
veuillez contacter / Para obtener información adicional, póngase en contacto
con: Wacom Europe GmbH · Zollhof 11-15, 40221 Düsseldorf, Germany
solutions@wacom.eu · +49 211 385 48 0



China

For more information please contact:

Wacom China Corporation · 518, West Wing Office, China World Trade Center,
No. 1 Jianguomenwai Avenue, Chaoyang District, Beijing 100004, China
e-signature@wacom.com · 400-810-5460

Hong Kong

For more information please contact:

Wacom Hong Kong Ltd. · Unit 1610, 16/F, Exchange Tower, 33 Wang Chiu Road
Kowloon Bay, Hong Kong
e-signature@wacom.com · +852 2573 9322



Australia

For more information please contact:

Wacom Australia Pty. Ltd. · Ground floor, Building 1, 3 Richardson Place,
North Ryde, NSW, 2113, Australia
Contactapbs@Wacom.com · +61 2 9422 6730

Korea

For more information please contact:

Wacom Korea Co., Ltd. · Rm #1211, 12F, KGIT Sangam Center, 402 Worldcup
Bukro, Mapo-gu, Seoul 03925, Korea
Contactapbs@Wacom.com · 080-800-1231

Singapore

For more information please contact:

Wacom Singapore Pte. Ltd. · 5 Temasek Boulevard, #12-09, Suntec Tower Five,
Singapore 038985, Contactapbs@Wacom.com · (503) 525-3100

India

For more information please contact:

Wacom India Pvt. Ltd. · 426, Tower B, DLF Building Jasola District Centre,
Mathura Road, New Delhi 110025 India, Contactapbs@Wacom.com
Customer Support: 000-800-100-4159, +91-11-47239412

wacom.com/for-business

© 2024 Wacom Co., Ltd.